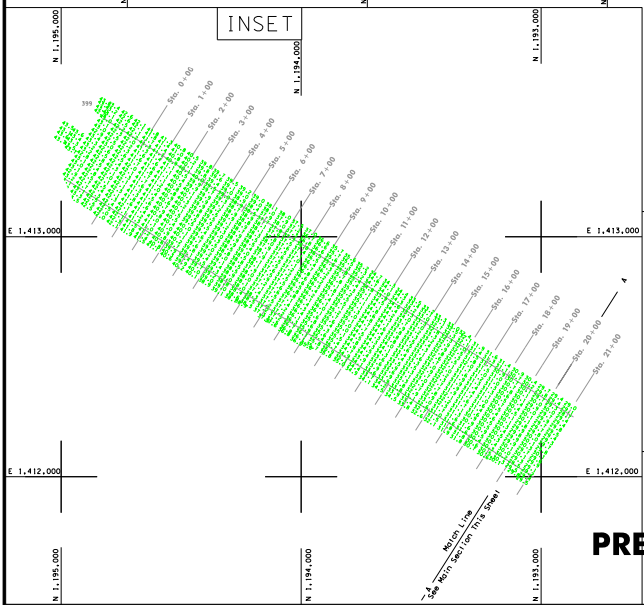
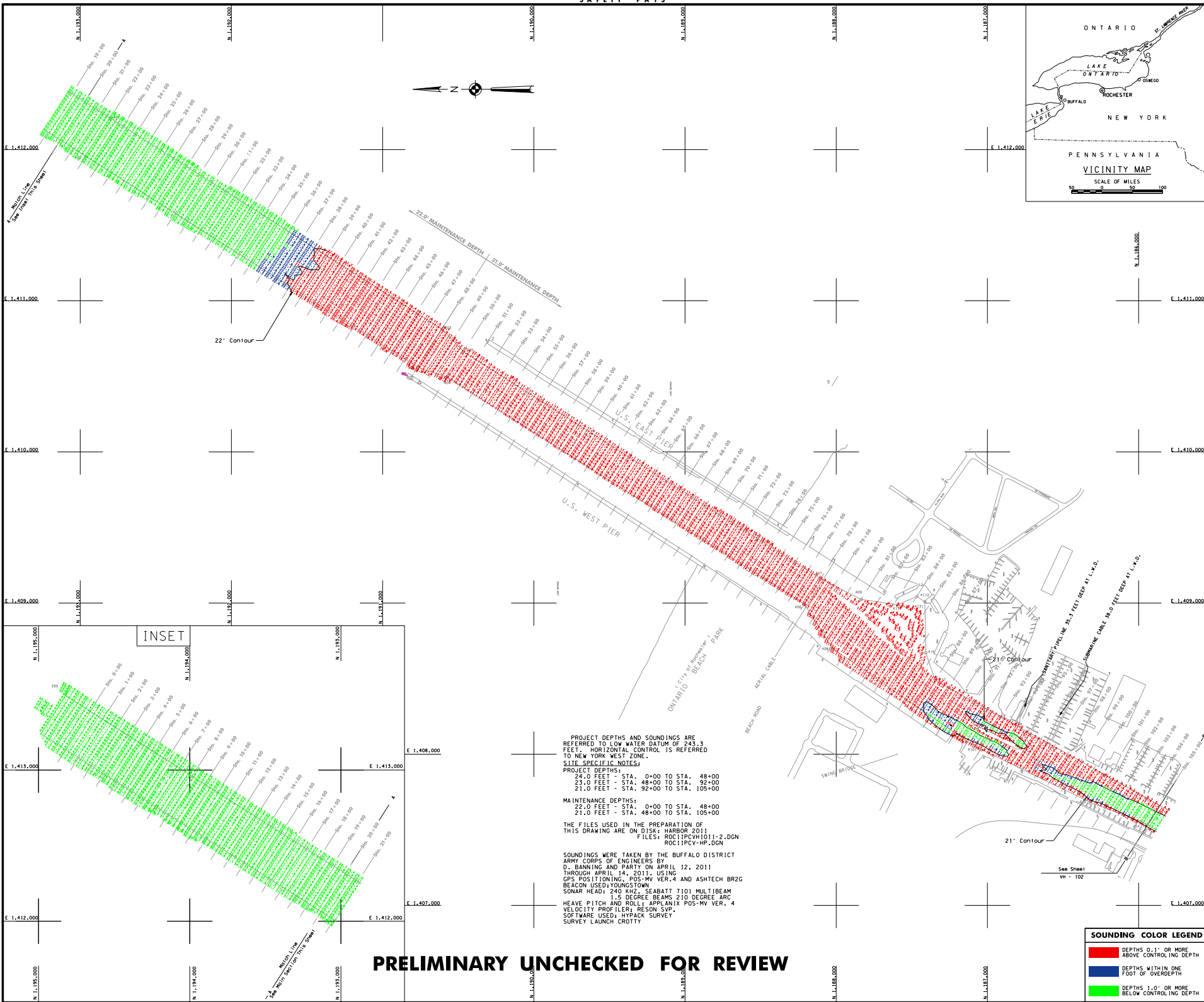




General Notes:
1. THE SOUNDINGS AND SOUNDING COLORS ON THIS DRAWING ARE THE PROPERTY OF THE ARMY CORPS OF ENGINEERS AND ARE NOT TO BE REPRODUCED OR TRANSMITTED IN ANY FORM OR BY ANY MEANS, ELECTRONIC OR MECHANICAL, INCLUDING PHOTOCOPYING, RECORDING, OR BY ANY INFORMATION STORAGE AND RETRIEVAL SYSTEM, WITHOUT THE WRITTEN PERMISSION OF THE ARMY CORPS OF ENGINEERS. THIS DRAWING IS THE PROPERTY OF THE ARMY CORPS OF ENGINEERS AND IS NOT TO BE REPRODUCED OR TRANSMITTED IN ANY FORM OR BY ANY MEANS, ELECTRONIC OR MECHANICAL, INCLUDING PHOTOCOPYING, RECORDING, OR BY ANY INFORMATION STORAGE AND RETRIEVAL SYSTEM, WITHOUT THE WRITTEN PERMISSION OF THE ARMY CORPS OF ENGINEERS. THIS DRAWING IS THE PROPERTY OF THE ARMY CORPS OF ENGINEERS AND IS NOT TO BE REPRODUCED OR TRANSMITTED IN ANY FORM OR BY ANY MEANS, ELECTRONIC OR MECHANICAL, INCLUDING PHOTOCOPYING, RECORDING, OR BY ANY INFORMATION STORAGE AND RETRIEVAL SYSTEM, WITHOUT THE WRITTEN PERMISSION OF THE ARMY CORPS OF ENGINEERS.



PROJECT DEPTHS AND SOUNDINGS ARE REFERRED TO LOW WATER DATUM OF 245.3 FEET. HORIZONTAL CONTROL IS REFERRED TO NEW YORK WEST ZONE.
SITE SPECIFIC NOTES:
PROJECT DEPTHS:
24.0 FEET - STA. 0+00 TO STA. 48+00
23.0 FEET - STA. 48+00 TO STA. 92+00
21.0 FEET - STA. 92+00 TO STA. 105+00
MAINTENANCE DEPTHS:
22.0 FEET - STA. 0+00 TO STA. 48+00
21.0 FEET - STA. 48+00 TO STA. 105+00
THE FILES USED IN THE PREPARATION OF THIS DRAWING ARE ON DISK: HARBOR 2011
FILES: ROC11PCVHW1011-2.DGN
ROC11PCV-HP.DGN
SOUNDINGS WERE TAKEN BY THE BUFFALO DISTRICT ARMY CORPS OF ENGINEERS BY D. BANNING AND PARTY ON APRIL 12, 2011 THROUGH APRIL 14, 2011. USING GPS POSITIONING, POS-MV VER. 4 AND ASHTECH BR2C BEACON USED; YOUNGSTOWN SONAR HEAD: 240 KHZ, SEABATT 7101 MULTIBEAM 1.5 DEGREE BEAMS 210 DEGREE ARC HEAVE PITCH AND ROLL: APPLANIX POS-MV VER. 4 VELOCITY PROFILER; RESON SVP. SOFTWARE USED: HYDRACK SURVEY SURVEY LAUNCH CROTTY

PRELIMINARY UNCHECKED FOR REVIEW

SOUNDING COLOR LEGEND

Red	DEPTHS 0.1' OR MORE ABOVE CONTROLLING DEPTH
Blue	DEPTHS WITHIN ONE FOOT OF OVERDEPTH
Green	DEPTHS 1.0' OR MORE BELOW CONTROLLING DEPTH

Drawn By: JAW
Checked By: JAW
Reviewed By: Robert H. Figlew III PLS
Checked: Survey Section
Approved: Raymond H. Lewis
DATE: 04/14/2011
PROJECT: HARBOUR AND MAINTENANCE SECTION

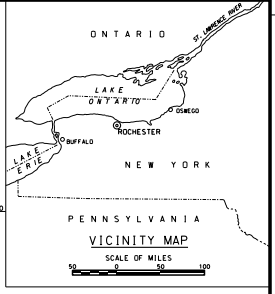
U.S. ARMY ENGINEER DISTRICT
CORPS OF ENGINEERS
BUFFALO, NEW YORK 14201-3199

ROCHESTER HARBOR, N.Y.
PROJECT CONDITION SOUNDINGS 2011
SCALE: 1" = 200'
50' x 100' 250'

Sheet reference number:
VH - 101
Sheet 1 of 2
115-ROC-V1

CHECK PRINT FOR FINAL DRAWING

*** SAFETY PAYS ***

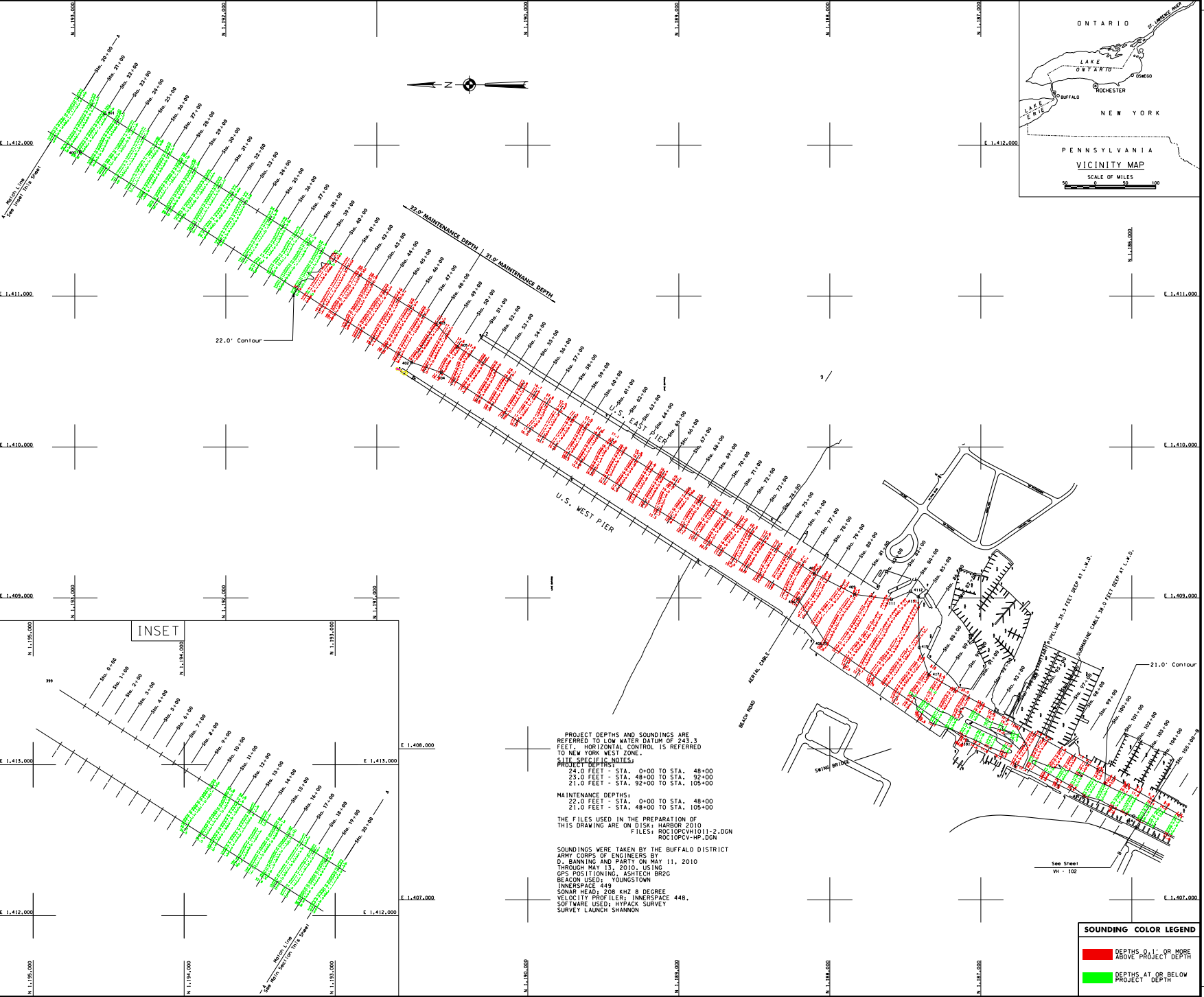


GENERAL NOTES
The information published on this map represents the results of surveys done on the date indicated and does not include any subsequent changes. All soundings are referred to the datum indicated. See the title block for more details. For a complete list of project files, see the title block. For a complete list of project files, see the title block. For a complete list of project files, see the title block. For a complete list of project files, see the title block.

U.S. ARMY ENGINEER DISTRICT
CORPS OF ENGINEERS
BUFFALO, NEW YORK 14201-3199

ROCHESTER HARBOR, N. Y.
PROJECT CONDITION SOUNDINGS 2010
SCALE: 1" = 200'

Sheet Reference Number:
VH - 101
Sheet 1 of 2
105-ROC-V1

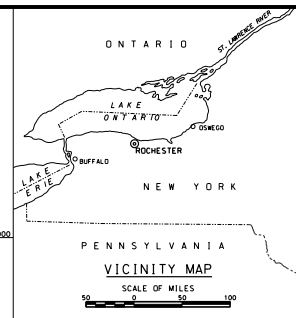


PROJECT DEPTHS AND SOUNDINGS ARE REFERRED TO LOW WATER DATUM OF 243.3 FEET. HORIZONTAL CONTROL IS REFERRED TO NEW YORK WEST ZONE.
PROJECT DEPTHS:
24.0 FEET - STA. 0+00 TO STA. 48+00
23.0 FEET - STA. 48+00 TO STA. 92+00
21.0 FEET - STA. 92+00 TO STA. 105+00
MAINTENANCE DEPTHS:
22.0 FEET - STA. 0+00 TO STA. 48+00
21.0 FEET - STA. 48+00 TO STA. 105+00
THE FILES USED IN THE PREPARATION OF THIS DRAWING ARE ON DISK: HARBOUR 2010
FILES: ROC10PCW1011-2.DGN
ROC10PCV-HR.DGN
SOUNDINGS WERE TAKEN BY THE BUFFALO DISTRICT ARMY CORPS OF ENGINEERS BY C. BANING AND PARTY ON MAY 11, 2010 THROUGH MAY 13, 2010, USING GPS POSITIONING, ASHTECH BR2C BEACON USED, YOUNGSTOWN INNERSPACE 449 SONAR HEAD, 208 KHZ 8 DEGREE VELOCITY PROFILER, INNERSPACE 448. SOFTWARE USED: HYDRAX SURVEY SURVEY LAUNCH SHANNON

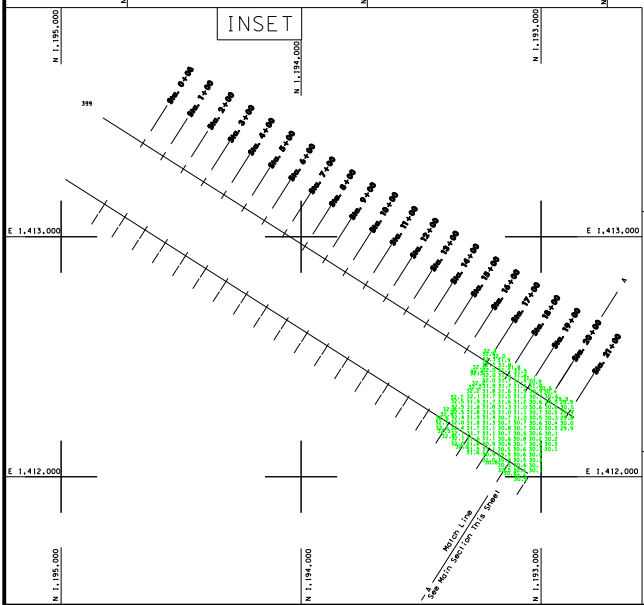
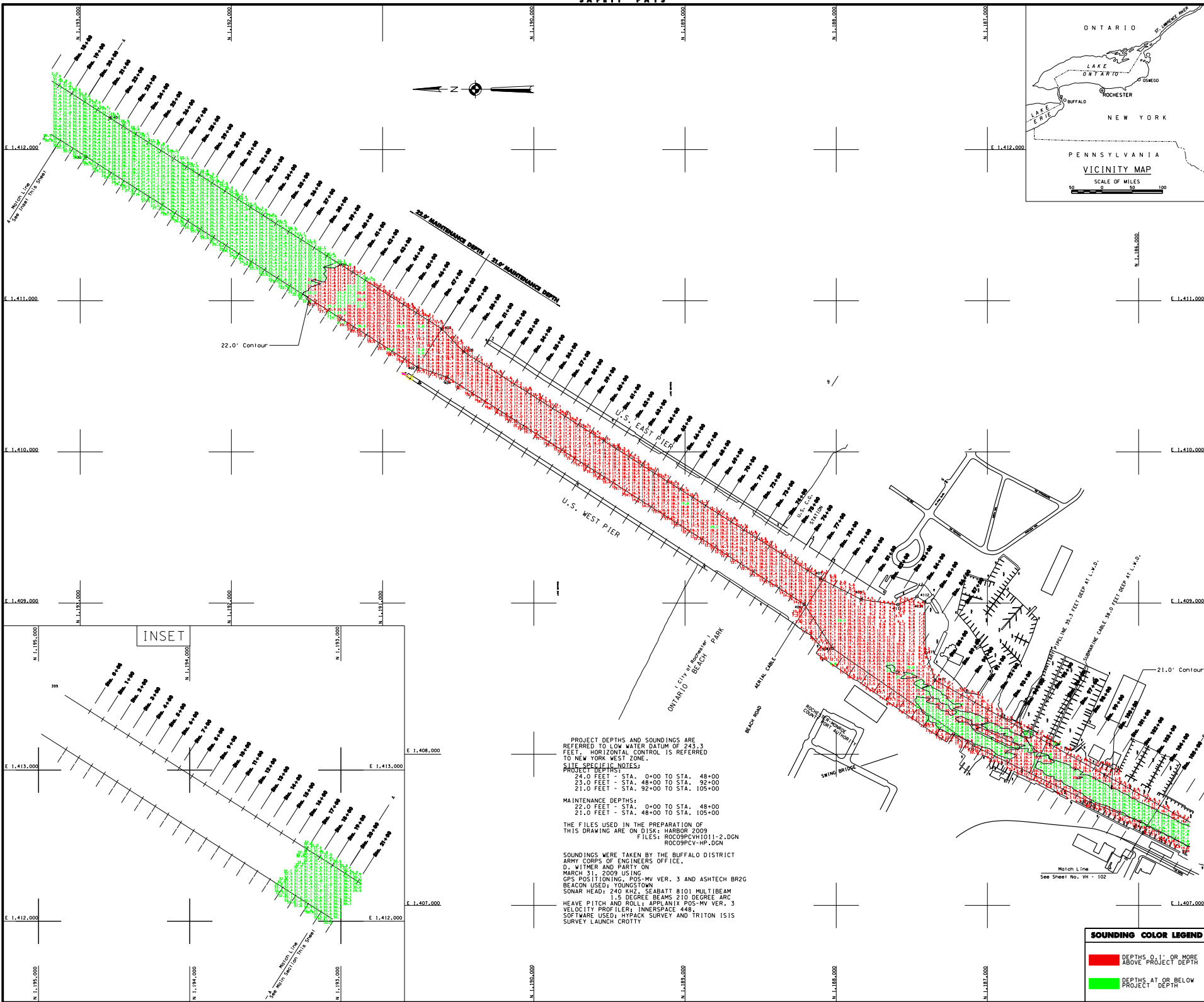
SOUNDING COLOR LEGEND

Red	DEPTHS 0.1' OR MORE ABOVE PROJECT DEPTH
Green	DEPTHS AT OR BELOW PROJECT DEPTH

*** SUPPORT VALUE ENGINEERING - IT PAYS ***



General Notes:
1. All soundings are in feet and referred to the International Great Lakes Datum 1985 (IGLD 1985) and all horizontal positions are referred to North American Datum 1983 (NAD83). See the State Plane Coordinate System for more information.
2. This drawing was prepared using a CAD system. Sounding may be 2-DIGIT/160.
3. This drawing was prepared using a CAD system. Sounding may be 2-DIGIT/160.



PROJECT DEPTHS AND SOUNDINGS ARE REFERRED TO LOW WATER DATUM OF 243.3 FEET. HORIZONTAL CONTROL IS REFERRED TO NEW YORK WEST ZONE.

SITE SPECIFIC NOTES:
PROJECT DEPTHS:
24.0 FEET - STA. 0+00 TO STA. 48+00
23.0 FEET - STA. 48+00 TO STA. 92+00
21.0 FEET - STA. 92+00 TO STA. 105+00

MAINTENANCE DEPTHS:
22.0 FEET - STA. 0+00 TO STA. 48+00
21.0 FEET - STA. 48+00 TO STA. 105+00

THE FILES USED IN THE PREPARATION OF THIS DRAWING ARE ON DISK: HARBOR 2009
FILES: ROC09PCV1011-2.DGN
ROC09PCV-HP.DGN

SOUNDINGS WERE TAKEN BY THE BUFFALO DISTRICT ARMY CORPS OF ENGINEERS OFFICE,
D. WITMER AND PARTY ON
MARCH 31, 2009 USING
GPS POSITIONING, POS-MV VER. 3 AND ASHTECH BR2C
BEACON USED: YOUNGSTOWN
SONAR HEAD: 240 KHZ, SEABATT 8101 MULTIBEAM
1.5 DEGREE BEAMS 210 DEGREE ARC
HEAVE PITCH AND ROLL: APPLANIX POS-MV VER. 3
VELOCITY PROFILER: INERSPACE 448
SOFTWARE USED: HYDRACK SURVEY AND TRITON ISIS
SURVEY LAUNCH CROTTY

SOUNDING COLOR LEGEND
DEPTHS 0.1' OR MORE ABOVE PROJECT DEPTH
DEPTHS AT OR BELOW PROJECT DEPTH

Drawn by: CAD
Reviewed by: [Signature]
Checked: Survey Unit
Approved: [Signature]

DATE: 07/18/2009 09:00 AM

U.S. ARMY ENGINEER DISTRICT
CORPS OF ENGINEERS
BUFFALO, NEW YORK 14201-3199

ROCHESTER HARBOR, N. Y.
PROJECT CONDITION SOUNDINGS 2009
SCALE OF 1" = 200'
SCALE: 1" = 200'

Sheet reference number:
VH - 101
Sheet 1 of 2
09S-ROC-11